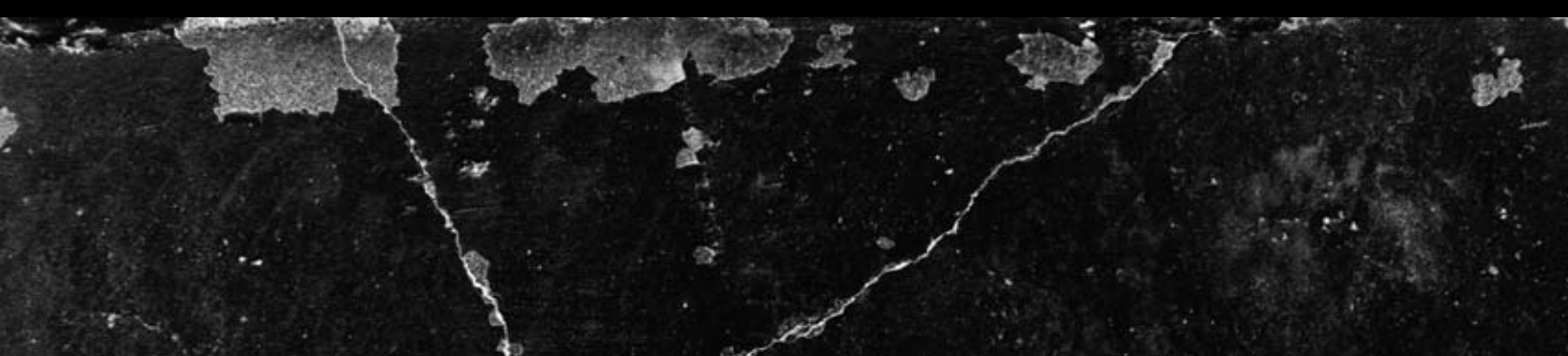




ARBOR
2010 SKATEBOARDS



SINCE DAY ONE, ARBOR SKATEBOARDS HAVE BEEN BUILT IN THE MOST RESPONSIBLE WAY POSSIBLE. TIME SPENT RIDING PROVIDES THE MOTIVATION. SAVING THIS PLANET IS ABOUT PROTECTING THE ENVIRONMENTS THAT RIDERS UTILIZE EVERYDAY. THAT BEING SAID, WE KNOW YOU EXPECT PERFORMANCE AND RELEVANCE, EVEN WHEN CHOOSING A SUSTAINABLE ALTERNATIVE. THAT'S WHY WE COMBINE ART AND TECHNOLOGY WITH THOSE ECO-MATERIALS THAT ARE CAPABLE OF DELIVERING BETTER LOOKING, BETTER PERFORMING, MORE DURABLE SKATEBOARDS - FORM STILL FOLLOWS FUNCTION.

FOR US, 2010 MARKS TWELVE YEARS CREATING SOME OF THE MOST UNIQUE SKATEBOARDS ON THE MARKET. IT ALSO REPRESENTS MORE THAN A DECADE OF LEADERSHIP IN THE MOVEMENT TO EXPAND WHAT SKATEBOARDING IS - A MOVEMENT THAT HAS ADVANCED THE SPORT BEYOND ITS TECHNICAL CORE TO A BROADER EXPERIENCE THAT ONCE AGAIN EMBRACES THE PURE FUN OF RIDING. TODAY, DOWNHILL, CRUISER, POOL, AND FREESTYLE SKATING ARE BACK AND STRONGER THAN EVER.

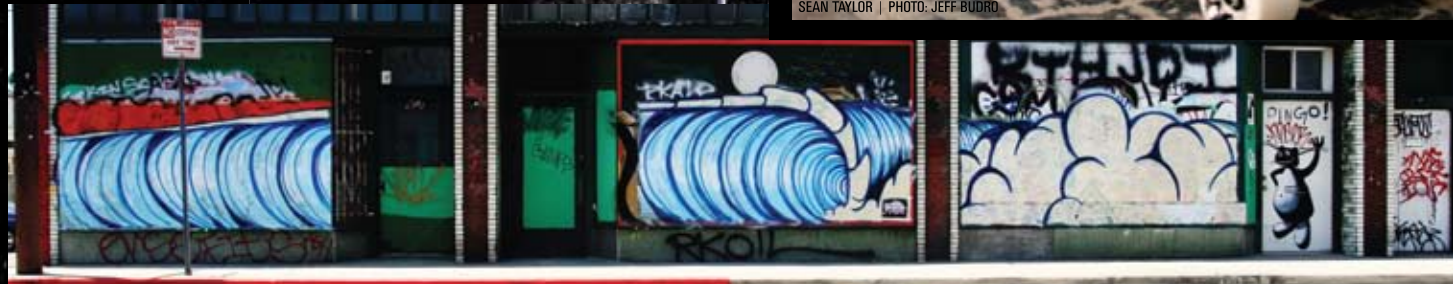
OVER THE YEARS, ARBOR HAS BECOME A COLLECTIVE OF ARTISTS, DESIGNERS, ATHLETES, COLLABORATORS, AND FRIENDS THAT RIDE - A GROWING CREW THAT REMAINS FOCUSED ON BLENDING ART, DESIGN, AND SUSTAINABLE MATERIALS INTO THE MOST SUCCESSFUL LINE OF RIDER-ORIENTED PRODUCTS AVAILABLE. WE HOPE YOU ENJOY THE NEW LINE.



SEAN TAYLOR | PHOTO: JEFF BUDRO



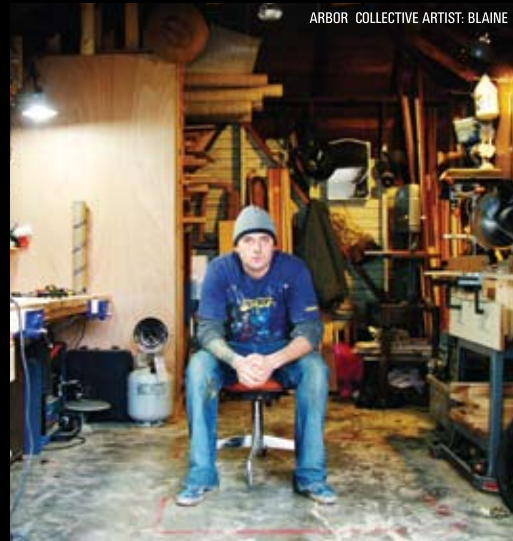
CHRISTIAN YEAGER | PHOTO: JAKE PICKLE



THE ARBOR COLLECTIVE



CHRISTIAN YEAGER | PHOTO: JAKE PICKLE



ARBOR COLLECTIVE ARTIST: BLAINE

CATALOG PHOTOGRAPHY BY:
JAKE PICKLE | JEFF BUDRO | CHRIS PARK



PHOTO: JAKE PICKLE

SKATE TEAM

- | | |
|------------------|------------------|
| KELLY SLATER | JIMMY HANSON |
| BONGA PERKINS | GREG BERGEN |
| SEAN TAYLOR | KEN PERKINS |
| RODGER EALES | DYLAN RICHARDSON |
| BEN GRAEFF | SIMON MRSIC |
| KATARINA LYERLY | CHRISTIAN YEAGER |
| DYLAN KOWALSKI | KATHERINE CARTER |
| FRANKIE D'ANDREA | JESS GRIMWOOD |
| CHAD CAMPBELL | LAUREN SWEENEY |
| SHANE EASTON | JOSH KANAN |
| JOE CHESHIRE | MARISSA HOOD |
| ANDREW BRINKMAN | JOSH HUNT |
| FRANCO BORGESE | BROOKE POWER |
| TOM TOMEZSKO | |



SHANE EASTON | PHOTO: TADASHI YAMADA

THE **MINI** SERIES
POCKET ROCKET | GB SIZZLER | BOGART



GREG BERGEN | PHOTO: JEFF BUDRO



ANDREW SIMILA | PHOTO: JAKE PICKLE

THE **POCKET ROCKET**

ARTIST: MAX GRUNDY | RANDY NOBORIKAWA

ARBOR'S MICRO-CRUISER - THE POCKET ROCKET IS DESIGNED FOR SNAPPY, THREAD-THE-NEEDLE MANEUVERABILITY AND ALL AROUND STASHABILITY. A CONCAVE PROFILE AND KICK TAIL/NOSE EXPAND THE PERFORMANCE RANGE OF THIS MINI DESIGN. COMPLETES INCLUDE: ARBOR 65MM 78A DUROMETER STREET SERIES WHEELS, ABEC 5 BEARINGS, AND 8" GULLWING MISSION TRUCKS.

LENGTH: 26.00" | WIDTH: 7.25" | WHEELBASE: 14.00"



POCKET ROCKET - KOA
W/ CLEAR RE-GRIP



POCKET ROCKET - BAMBOO/ICE
W/ CLEAR RE-GRIP



POCKET ROCKET - BAMBOO/SIGNATURE
W/ CLEAR RE-GRIP | NOTE: ASSORTED COLORS

THE **GB SIZZLER**

ARTIST: JIMIYO

ARBOR'S CHOPPED DOWN SWALLOWTAIL - THE SIZZLER, WITH ITS FAT, FUNCTIONAL, CONCAVE SHAPE, KICKED TAIL AND NOSE, AND TIGHT WHEELBASE IS IDEAL FOR SLASHING BANKS, POWERING DOWN THE LINE, OR CARVING TIGHT POCKET TURNS. COMPLETES INCLUDE: ARBOR 65MM 78A DUROMETER STREET SERIES WHEELS, ABEC 5 BEARINGS, AND 8" GULLWING MISSION TRUCKS.

LENGTH: 31.75" | WIDTH: 9.00" | WHEELBASE: 17.50"



SIZZLER - KOA\RED
W/ CLEAR RE-GRIP



SIZZLER - KOA\BLUE
W/ CLEAR RE-GRIP

THE **BOGART**

ARTIST: RANDY NOBORIKAWA

THE BOGART IS BACK WITH AN UPDATED, SLIGHTLY LONGER SHAPE. WE KEPT THE ORIGINAL FLAT, CAMBERED DESIGN, FATTER PROFILE, AND FUNCTIONAL TAIL FOR VERSATILE STREET PERFORMANCE. A SHORT WHEELBASE STILL DELIVERS TIGHT RADIUS TURNING, IDEAL FOR BOGARTING AROUND PEDESTRIANS. COMPLETES INCLUDE: ARBOR 65MM 78A DUROMETER STREET SERIES WHEELS, ABEC 5 BEARINGS, AND 8" GULLWING MISSION TRUCKS.

LENGTH: 33.00" | WIDTH: 8.50" | WHEELBASE: 20.50"



BOGART - BAMBOO
W/ CLEAR RE-GRIP

THE ROLLER SERIES

BLUNT | FLEETWOOD | CROSS STEP



SEAN TAYLOR | PHOTO: JEFF BUDRO



ANDREW SIMILA | PHOTO: JAKE PICKLE



KATARINA LYERLY | PHOTO: JEFF BUDRO

THE BLUNT

ARTIST: DAVE KINSEY | MARKA 27

ARBOR'S MOST VERSATILE SHAPE FOR ALL-AROUND LONGBOARD SKATING - THE BLUNT IS DESIGNED WITH A FAT FRONTEND FOR STEP-UP CONTROL AT SPEED, AND A CONCAVE, TAPERED SHAPE AND ROUNDED KICK TAIL/NOSE FOR VERSATILE PERFORMANCE. COMPLETES INCLUDE: ARBOR 70MM 78A DUROMETER STREET SERIES WHEELS, ABEC 5 BEARINGS, AND 10" GULLWING CHARGER TRUCKS.

LENGTH: 44.00" | WIDTH: 9.25" | WHEELBASE: 23.75"



BLUNT - KOA
W/ CLEAR RE-GRIP



BLUNT - BAMBOO
W/ CLEAR RE-GRIP



FLEETWOOD - STRINGERS
W/ CLEAR RE-GRIP

THE CROSS STEP

ARTIST: RICK RIETVELD

ARBOR'S OLD-SCHOOL CRUISER - THE CROSS STEP IS DESIGNED WITH A CLASSIC LONGBOARD SHAPE AND SURF-INSPIRED ROCKER THAT DELIVERS AN EXCEPTIONALLY FORGIVING FLEX THAT'S IDEAL FOR CONTROLLING SPEED, ABSORBING VARIED SURFACES, AND THROWING BIG RADIUS TURNS. A LONG, WIDE, FLAT PROFILE SUPPORTS FOOTWORK AND NOSE RIDING. COMPLETES INCLUDE: ARBOR 70MM 78A DUROMETER STREET SERIES WHEELS, ABEC 5 BEARINGS, AND REVENGE ALPHA II 9.5" TRUCKS.

LENGTH: 46.00" | WIDTH: 10.00" | WHEELBASE: 33.25"



CROSS STEP - STRINGERS
W/ CLEAR RE-GRIP

THE FLEETWOOD

ARTIST: MAX GRUNDY

THE CADILLAC OF LONGBOARDS - THE FLEETWOOD IS DESIGNED WITH A CAMBERED PROFILE AND PROGRESSIVE SHAPE TO PROVIDE TIGHT, SNAPPY TURNS, AND AN ULTRA RESPONSIVE ALL-AROUND RIDE. THE FLEETWOOD IS AN AMAZING BLEND OF OLD-SCHOOL STYLE AND MODERN PERFORMANCE. COMPLETES INCLUDE: ARBOR 70MM 78A DUROMETER STREET SERIES WHEELS, ABEC 5 BEARINGS, AND REVENGE ALPHA II 9.5" TRUCKS.

LENGTH: 43.00" | WIDTH: 9.25" | WHEELBASE: 29.75"



FRANCO BORGESE | PHOTO: JEFF BUDRO



TOM ROMEZKO | PHOTO: JAKE PICKLE

THE CONCRETE SERIES

HYBRID | BUG | OSO



SHANE EASTON | PHOTO: TADASHI YAMAODA

THE HYBRID

ARTIST: JOEL WOODMAN
JEFF SOTO | DAVE KINSEY

ARBOR'S MULTI-DIMENSIONAL LONG SKATE - THE HYBRID WAS DESIGNED WITH A WIDE MID-SECTION, CONCAVE PROFILE, AND ROUNDED KICK TAIL/NOSE TO DELIVER BOTH LONGBOARD STABILITY AND REAL FLAT-GROUND/PARK PERFORMANCE. COMPLETES INCLUDE: ARBOR 65MM 78A DUROMETER STREET SERIES WHEELS, ABEC 5 BEARINGS, AND 10" GULLWING CHARGER TRUCKS.

LENGTH: 38.00" | WIDTH: 9.25" | WHEELBASE: 21.00"



HYBRID - KOA
W/ CLEAR RE-GRIP

HYBRID - GT
W/ GRIP TAPE

HYBRID - BAMBOO
W/ CLEAR RE-GRIP

THE BUG

ARTIST: ZACH JOHNSEN | RUSS MILLS

ARBOR'S MOST STREET-CENTRIC SKATE - THE BUG WAS DESIGNED LIGHT AND MANEUVERABLE FOR MODERN, MULTI-FUNCTIONAL AROUND TOWN PERFORMANCE. A CONCAVE PROFILE AND ROUNDED KICK TAIL/NOSE DELIVER BOTH URBAN AND CRUISER FUNCTION. COMPLETES INCLUDE: ARBOR 65MM 78A DUROMETER STREET SERIES WHEELS, ABEC 5 BEARINGS, AND 9" GULLWING CHARGERS TRUCKS.

LENGTH: 36.00" | WIDTH: 8.50" | WHEELBASE: 20.00"



BUG - KOA
W/ CLEAR RE-GRIP

BUG - BAMBOO
W/ CLEAR RE-GRIP

THE OSO

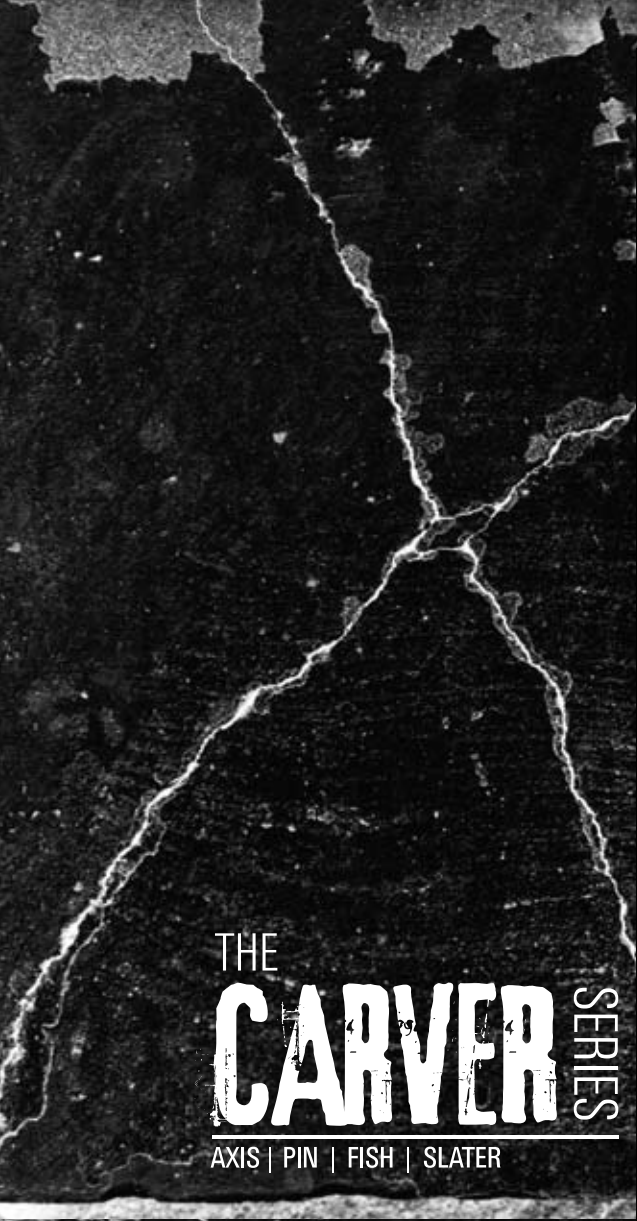
ARTIST: JIMIYO

ARBOR'S OLD-SCHOOL POOL DECK - THE OSO WAS DESIGNED WITH A TRADITIONAL FAT SHAPE, STUB NOSE, AND SQUARED TAIL, THEN UPGRADED WITH A LITTLE CONCAVE TO PROVIDE MODERN TRANSITION-LEVEL PERFORMANCE. COMPLETES INCLUDE: S9 61MM 82A DUROMETER WHEELS, ABEC 5 BEARINGS, AND INDY STAGE-9 TRUCKS.

LENGTH: 30.00" | WIDTH: 10.00" | WHEELBASE: 16.00"

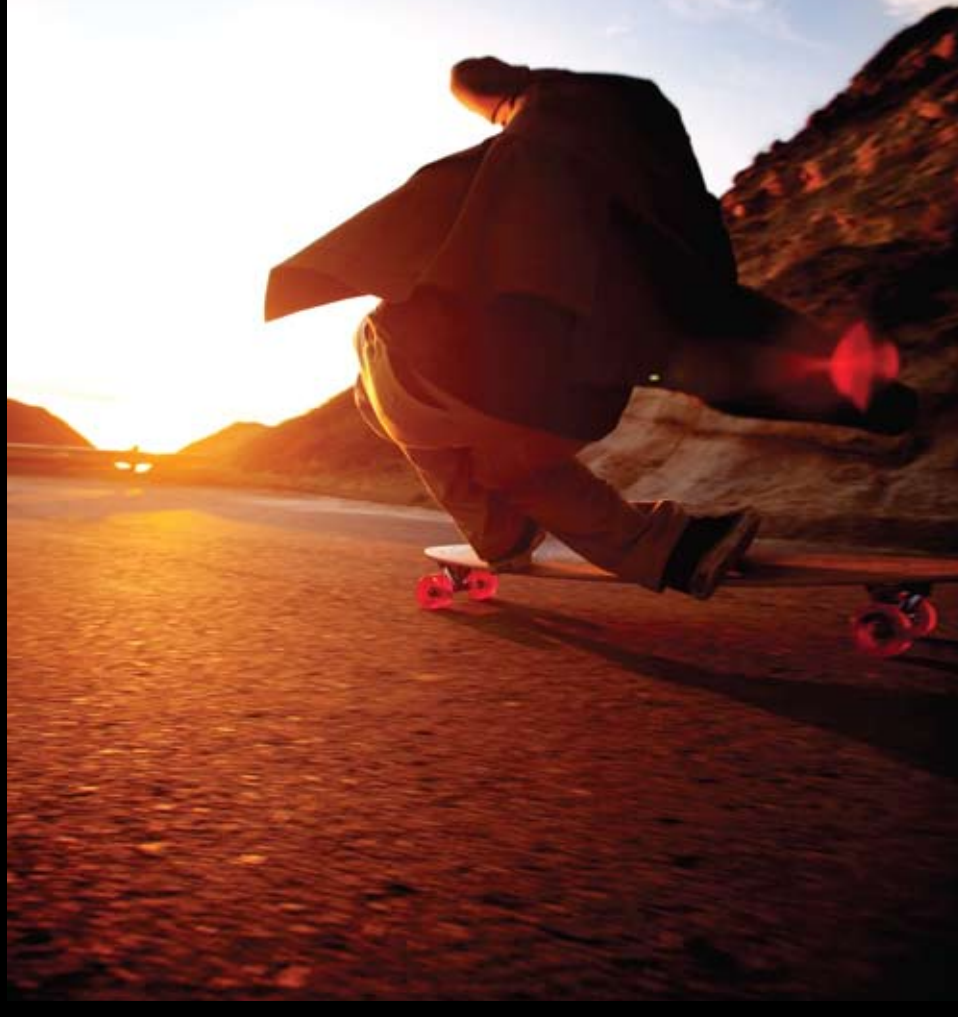


OSO - STRINGERS
W/ CLEAR RE-GRIP



THE
CARVER SERIES
AXIS | PIN | FISH | SLATER

PHOTO: JORGE SALAS



CHRISTIAN YEAGER | PHOTO: JAKE PICKLE



SEAN TAYLOR, GREG BERGEN | PHOTO: JEFF BUDRO

THE
AXIS

ARTIST: HANNAH STOFFER | PHOTO BY JUSTIN KLOUS

ARBOR'S NEW DROPTHROUGH MODEL- THE AXIS IS BUILT TO PROVIDE STABILITY AT SPEED WITH AMAZING CARVE AND SLIDE PERFORMANCE. A SYMMETRICAL SHAPE AND MORE FUNCTIONAL NOSE/ TAIL PROFILE OFFER HIGHLY VERSATILE STANCE AND SWITCH OPTIONS, WHILE A CAMBERED DESIGN DELIVERS A MEDIUM FLEX FOR IMPROVED RAIL-TO-RAIL REACTION TIME AND RIDING SURFACE-MANAGEMENT. A SNOWBOARD INSPIRED SIDECUT ENCOURAGES A CENTERED STANCE, WHILE TUNING THE FLEX FOR EASIER TURN INITIATION. COMPLETES INCLUDE: ARBOR'S NEW 72MM 75A DUROMETER SLALOM SERIES WHEELS, ABEC 5 BEARINGS, AND 9" GULLWING CHARGER TRUCKS.

LENGTH: 40.00" | WIDTH: 8.50" | WHEELBASE: 30.00"



AXIS - KOA
W/ CLEAR RE-GRIP



AXIS - BAMBOO
W/ CLEAR RE-GRIP



PIN - KOA
W/ CLEAR RE-GRIP



PIN - GT
W/ GRIP TAPE



PIN - BAMBOO
W/ CLEAR RE-GRIP

THE
FISH

ARTIST: JAKE PICKLE | BLAINE FONTANA

ARBOR'S COMPACT PIN - THE FISH WAS DESIGNED WITH A HYPER-EXTENDED WHEELBASE, TIMELESS TEARDROP SHAPE, AND CONCAVE PROFILE TO PROVIDE BOTH CARVE AND DOWNHILL FUNCTION. COMPLETES INCLUDE: ARBOR 65MM 78A DUROMETER STREET SERIES WHEELS, ABEC 5 BEARINGS, AND 9" GULLWING CHARGER TRUCKS.

LENGTH: 38.00" | WIDTH: 8.75" | WHEELBASE: 27.75"



FISH - KOA
W/ CLEAR RE-GRIP



FISH - BAMBOO
W/ CLEAR RE-GRIP



SLATER - KOA
W/ CLEAR RE-GRIP

THE
PIN

ARTIST: BLAINE FONTANA | CODY GEWERTZ | NANAMI COWDROY

THE CLASSIC TAPERED CARVER - THE ARBOR PIN FEATURES A HUGE WHEELBASE FOR MAXIMUM STABILITY AT HIGH SPEED, AND A WIDE, CONCAVE MID-SECTION FOR DEEP, OPEN-STANCE, LOCK-N-HOLD SKATING. COMPLETES INCLUDE: ARBOR'S NEW 72MM 75A DUROMETER SLALOM SERIES WHEELS, ABEC 5 BEARINGS, AND 9" GULLWING CHARGER TRUCKS.

LENGTH: 46.00" | WIDTH: 9.50" | WHEELBASE: 32.25"

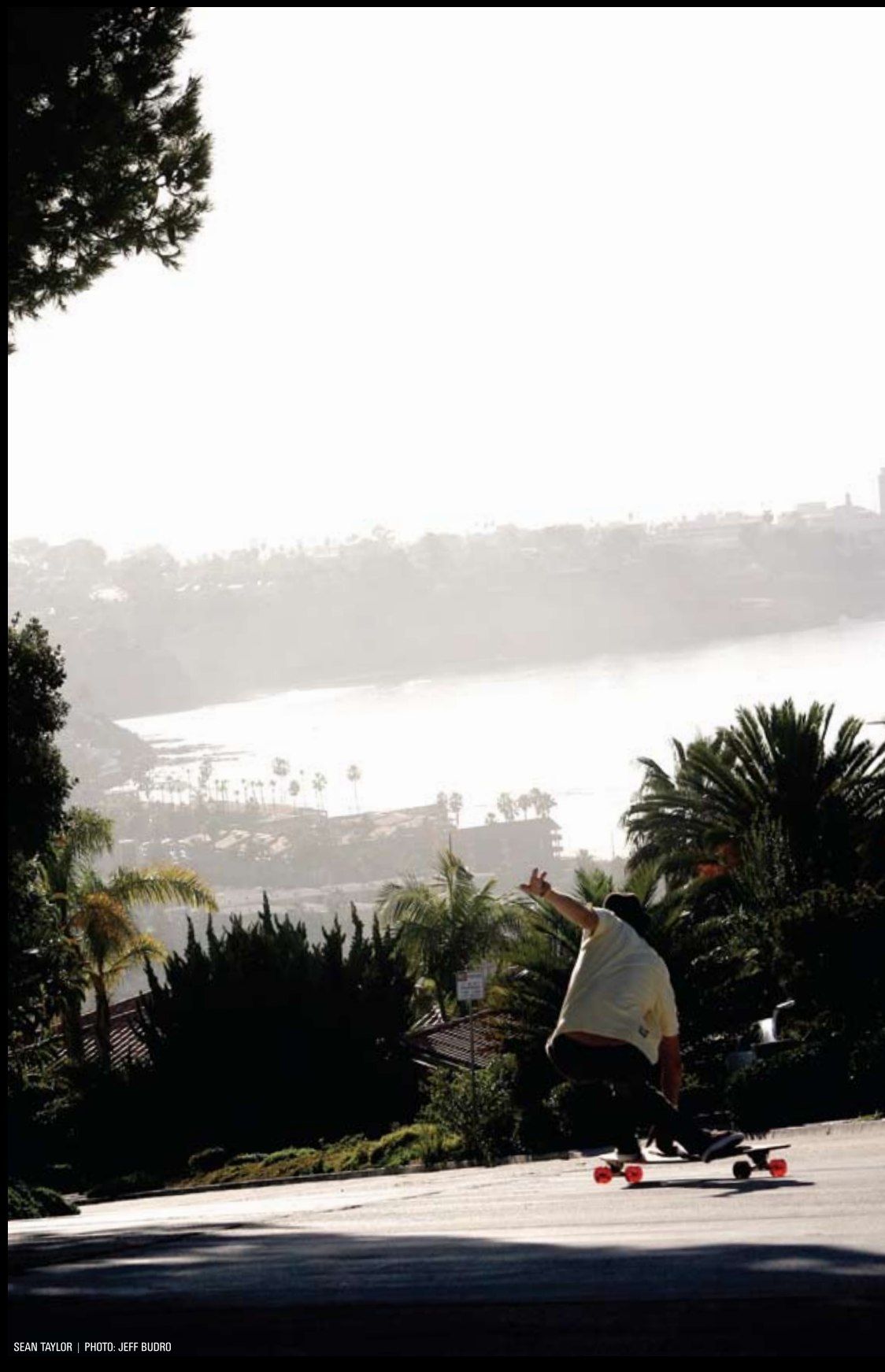
THE
SLATER

ARTIST: JAKE PICKLE

CREATED WITH FRIEND AND 9X ASP WORLD SURFING CHAMPION, KELLY SLATER - THIS TAPERED CONCAVE SHAPE PROVIDES THE TIGHTEST TURNING OF ANY SKATE IN THE "CARVER SERIES," MAKING IT EXCEPTIONALLY MANEUVERABLE AND FAST DOWN THE LINE. THE SWALLOWTAIL DESIGN WAS INSPIRED BY ONE OF KELLY'S PREFERRED SURFBOARD SHAPES. COMPLETES INCLUDE: ARBOR 65MM 78A DUROMETER STREET SERIES WHEELS, ABEC 5 BEARINGS, AND 9" GULLWING CHARGER TRUCKS.

LENGTH: 37.00" | WIDTH: 8.75" | WHEELBASE: 26.30"

THE
FLEX SERIES
MINDSTATE | WATERMAN | ASSAULT



SEAN TAYLOR | PHOTO: JEFF BUDRO



MINDSTATE-K0A
W/ CLEAR RE-GRIP

THE
MINDSTATE ARTIST: BLAINE FONTANA

ARBOR'S COMPACT FLEX-STYLE PIN - THE MINDSTATE IS A SLIGHTLY CONCAVE, FIBERGLASS-REINFORCED CARVER THAT WAS DEVELOPED TO DELIVER A FUN, MORE ENERGETIC RIDE WITH TONS OF REBOUND FOR ULTRA-RESPONSIVE TURNING AND SMOOTHER PERFORMANCE ACROSS ROUGHER SURFACES. COMPLETES INCLUDE: ARBOR 65MM 78A DUROMETER STREET SERIES WHEELS, ABEC 5 BEARINGS, AND 9" GULLWING CHARGER TRUCKS.

LENGTH: 38.00" | WIDTH: 8.75" | WHEELBASE: 26.25"



WATERMAN-K0A
W/ CLEAR RE-GRIP

THE
WATERMAN ARTIST: JAKE PICKLE

THE REDESIGNED WATERMAN IS A HIGHLY TAPERED, FLEX-STYLE PIN WITH A SLIGHTLY CONCAVE SHAPE AND OVERSIZED WHEELBASE THAT PROVIDE STABILITY AND CONTROL AT SPEED. A RESPONSIVE, FIBERGLASS-REINFORCED FLEX DELIVERS A SMOOTH, CARVE-ORIENTED RIDE, WITH AMAZING RAIL-TO-RAIL PERFORMANCE. COMPLETES INCLUDE: ARBOR 70MM 78A DUROMETER STREET SERIES WHEELS, ABEC 5 BEARINGS, AND 9" GULLWING CHARGER TRUCKS.

LENGTH: 42.00" | WIDTH: 9.50" | WHEELBASE: 29.50"



ASSAULT-GT
W/ GRIP TAP

THE
ASSAULT

ARBOR'S MOST ADVANCED DOWNHILL DESIGN - A FIBERGLASS REINFORCED, DROPTHROUGH THAT'S BUILT TO DELIVER HIGH-LEVEL SPEED, DRIFT, AND CARVE PERFORMANCE. THE NEW ASSAULT'S CAMBERED, SYMMETRICAL SHAPE IS IDEAL FOR SWITCH AND SLIDE MANAGEMENT, WHILE ITS FLEX PROVIDES AN AMAZING LEVEL OF RAIL-TO-RAIL POWER WITH A PHENOMENALLY SMOOTH RIDE. ADDED SIDECUT CENTERS YOUR STANCE AND IMPROVES TURN INITIATION. EXPECT STABILITY, CONTROL, AND RETURN IN A LIGHTWEIGHT PACKAGE. COMPLETES INCLUDE: ARBOR'S NEW 72MM 75A DUROMETER SLALOM SERIES WHEELS, ABEC 5 BEARINGS, AND 9" GULLWING CHARGER TRUCKS.

LENGTH: 42.00" | WIDTH: 8.75" | WHEELBASE: 32.00"

TRUCKS

GULLWING MISSION TRUCKS: 9" AND 10"

THE IDEAL STANDARD TRUCK - DESIGNED TO PROVIDE A TIGHTER FEEL FOR STREET LEVEL PERFORMANCE.



SILVER/SILVER

GULLWING CHARGER TRUCKS: 9.0" AND 10.0"

ONE OF THE BEST REVERSE-KINGPIN TRUCKS ON THE MARKET - PROVIDES IMPROVED TURNING FOR DOWNHILL AND CARVE-ORIENTED SKATING.



SILVER/SILVER

WHITE/BLUE

SILVER/BLACK

BLACK/BLACK

BLACK/RASTRA

WHEELS

STREET SERIES: 65MM AND 70MM, 78A DUROMETER

A CENTER-SET WHEEL THAT'S IDEAL FOR ALL-AROUND LONGBOARD SKATING WITH A MID-WIDE PROFILE TO IMPROVE TRACTION AND A ROUNDED EDGE FOR CATCH FREE PERFORMANCE.



65MM

70MM

OUR COMPONENTS



REVENGE TRUCKS: 8.50" (ALPHA I) AND 9.25" (ALPHA II)

A UNIQUE TORSION TRUCK - DESIGNED FOR SUPER TIGHT TURNING, IDEAL FOR CARVING ON LONGER MODELS. AN EXTERNAL LOCKING MECHANISM ELIMINATES THE POSSIBILITY OF WHEEL BITE AND NEED FOR RISERS.



SILVER/SILVER

NEW SLALOM SERIES: 72MM, 75A DUROMETER

A SOFTER AND WIDER DOWNHILL WHEEL WITH A 2/3 OFFSET VENTED HUB FOR LIGHTER AND COOLER PERFORMANCE AND MAXIMUM TRACTION AND STABILITY - IDEAL FOR MANAGING YOUR SPEED, DEEPER CARVING, AND TIGHT SLALOM TURNING. MADE WITH AN ENVIRONMENTALLY FRIENDLY BIO-URETHANE FORMULA THAT REDUCES OUR RELIANCE ON HARMFUL SYNTHETIC MATERIALS, WHILE MAINTAINING THE HIGHEST LEVEL OF PERFORMANCE.



OUR MATERIALS



KOA DECKS

MADE WITH SEVEN PLYS OF HARDROCK MAPLE AND A FINISH PLY OF HAWAIIAN KOA, ALL OF WHICH ARE SUSTAINABLY SOURCED. KOA'S MORE DENSELY PACKED FIBERS ADD IMPORTANT STRUCTURE, WHICH IMPROVES RETURN, WHILE PROVIDING A ONE-OF-A-KIND GRAIN PATTERN ON EACH DECK. KOA WOOD WAS USED BY THE HAWAIIANS TO BUILD THE 1ST SURFBOARDS OVER 600 YEARS AGO.

BAMBOO DECKS

MADE WITH SIX PLYS OF SUSTAINABLY SOURCED HARDROCK MAPLE AND A POWER PLY OF ENVIRONMENTALLY FRIENDLY BAMBOO. BAMBOO IS A REMARKABLY RENEWABLE, SUSTAINABLY GROWN MATERIAL. BY ADDING BAMBOO AS A POWER-GENERATING DECK-SIDE PLY, WE NOT ONLY GIVE OUR SKATEBOARDS THAT CLEAN ZEN FLAVOR, WE DELIVER MUCH IMPROVED RETURN AND LASTING DURABILITY.

STRINGER DECKS

MADE WITH SIX PLYS OR SEVEN PLYS (OSO) OF SUSTAINABLY SOURCED HARDROCK MAPLE AND A RANGE OF SUSTAINABLY SOURCED WOOD STRINGERS, WHICH ARE COMBINED INTO A DECK-SIDE POWER PLY OR FINISH PLY (OSO). THE HARDWOOD STRINGER DECK DELIVERS THAT OLD-SCHOOL FLAVOR AND IMPROVED RETURN.

WOOD BY-PRODUCT

ALL WOOD BY-PRODUCT CREATED DURING THE PRODUCTION OF OUR SKATEBOARDS IS RECLAIMED FOR USE IN OTHER ARBOR PRODUCTS OR BY OUTSIDE COMPANIES. THIS ALLOWS ARBOR TO STRETCH AN IMPORTANT RESOURCE, WHILE HELPING TO REDUCE THE STRAIN ON LANDFILLS AND FORESTLANDS.

RECYCLED GLASS RE-GRIP

MOST ARBOR DECKS ARE GRIPPED WITH LONG-LASTING CRUSHED RECYCLED GLASS. THIS ULTRA CLEAR RE-GRIP SURFACE ALLOWS THE DECK'S NATURAL GRAIN AND COLOR TO REMAIN HIGHLY VISIBLE, WHILE PROVIDING BETTER PERFORMANCE THAN SILICA BEAD ALTERNATIVES.

WATER BASED FINISHES

ALL ARBOR SKATEBOARDS ARE PRODUCED USING A WATER-BASED SANDING SEALER AND FINAL FINISH TO AVOID POLLUTING THE AIR WE BREATHE, ESPECIALLY WHEN SKATING.

RECYCLED PLASTIC RISERS

ALL ARBOR COMPLETES ARE SHIPPED WITH RECYCLED PLASTIC RISERS, WHICH ALLOWS US TO REDUCE OUR DEPENDENCE ON PETROLEUM-BASED PLASTICS, WHILE HELPING THE EFFORT TO STOP THE PROLIFERATION OF PLASTIC POLLUTION.



COVER: JOSH HUNT | PHOTO: CHRIS PARK - BACK COVER: CHRISTIAN YEAGER | PHOTO: JAKE PICKLE



ARBOR COLLECTIVE.COM

102 WASHINGTON BLVD. VENICE CA, 90292 - INFO@ARBORCOLLECTIVE.COM - P: 1.310.577.1120 - F: 1.858.433.8617

* THIS CATALOG IS PRINTED WITH SOY BASED INK ON FSC CERTIFIED SUSTAINABLE PAPER.